



EMA

Surfaces

Walkways and Pathways (NBC B-2.2.1)

Any ramp which is part of a walkway should comply with:

- a) Walkways shall be **smooth**, hard and have **levelled** surface suitable for walking and wheeling. **Irregular surfaces** as cobble stones, coarsely exposed aggregate concrete, bricks, etc, **often cause bumpy rides and shall be avoided**.

Drainage of Path/Access Routes (NBC B-2.2.5)

A drainage grating that is within the boundaries of a path or a ramp shall be set flush with the surface. Should have a gap of not more than **12.5 mm** between the grating elements.

Surfaces on Kerbs and Dropped Ramps (NBC B-2.3.1)

- a) They shall have a slip-resistant surface.
b) They **shall avoid raised traction strips** in order to reduce the hazard to everyone.
c) They shall be designed not to allow water accumulating on the walking surface
k) They shall be provided with adequate visual and tactile warning.

Tactile Guiding Surface Indicators (NBC B-2.5.2)

Warning blocks shall be placed **300 mm** from the beginning and end of the ramps. Provided with a tactile warning strip of the nominal width of **600 mm** at the top of the ramp. Tactile warning strip should have a minimum luminous contrast of **70% LRV** with the adjoining surfaces.

Surfaces (NBC B-5.1.e)

Internal floor surfaces shall be of materials that do not impede the movement of wheelchairs. If a mat is provided it shall be in level with the floor finish

Walkway Surface Features (NBC B-5.2.7.1)

Floor surface shall be stable, firm, **level**, and slip-resistant, preferably of matt finish **and shall not have any projections, drops, or unexpected variation in level** that may impede the easy access by persons with disabilities.

- b) Floor patterns that could be mistaken for steps, for examples **stripes**, shall not be used....
c) Floors shall be levelled.

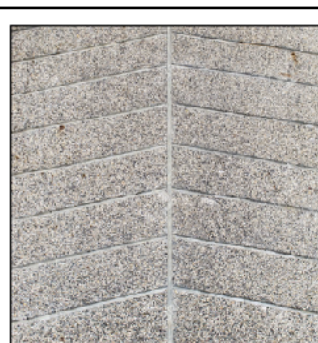
Ramp Surface (NBC B-6.2.4 & NBC B-6.2.1)

Ramps and landing surfaces shall be non-glare, **smooth, level**, even and **slip-resistant** even when wet. Outdoor ramps and their surface shall be designed to prevent water from accumulating on the walking surfaces. The surface finish shall be hard and suitable for the volume of traffic that the ramp is likely to experience.

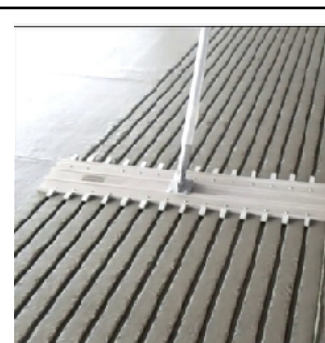
- e) Shiny, polished surface materials that cause glare **shall not** be used for ramps.

Stairs (NBC - B-6.3.1)

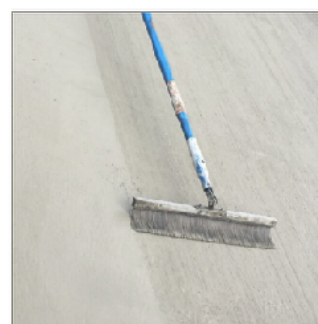
- a) Slippery surfaces like granite, glazed tiles shall be avoided.
b) Shiny, polished surface materials that cause glare shall not be used for stairs or ramps.



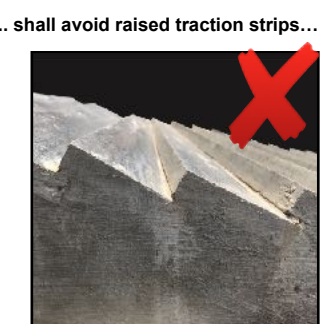
NBC B-6.2.4



New poured cement surface can be grooved with a wooden rake.



New poured cement brushed to provide a non-slip surface



B-2.3.1 b)



NBC B-6.2.4



NBC B-2.5.2



NBC B-6.2.1 Draining



Establishment Name Building Name		Address			
SN	Description	Required	Y/N	Actual	Notes
02 01. 01	Raised traction strips used on ramps?	Raised edge traction strips should never be used.			
02 01. 02	All surfaces are non-slip?	Non-slip surfaces are required in all areas including steps, ramp, walkways etc			
02 01. 03	All surfaces are a well drained?	Water should not accumulate on the path, landings or surface of a ramp or its landings			
02 01. 04	TGSI are not put on the ramp slope.	Ramps do not need TGSI as there are handrails on both sides.			
02 01. 05	TGSI at both ends of ramps and stairs and guiding tiles to locations.	Warning TGSI 300 mm from any hazard. Guiding TGSI on routes.			
02 01. 06	Paths do not have any uneven surface	Cobblestones, uneven paving with gaps, or any other uneven material should be avoided.			
02 01. 07	Surfaces are non-glare.	Surface should not reflect light in a glaring way.			
02 01. 08	Surfaces are firm	No sand, grass or mud paths. Or thick carpets, matting or loose rugs.			
02 01. 09	No gratings, grooves or drainage slots	Surface openings must be less than 12.5 mm wide. Slats/gratings should be at an angle to the direction of traffic.			
02 01. 10	Other				